

WHAT COVID-19 MADE VISIBLE: LESSONS LEARNED

"A shadow pandemic that revealed the failures of our systems."

The COVID-19 pandemic allowed the world to reflect on the root of our failing systems. It was an absolute X-ray of society, revealing the fissures and evils that exist within it. The pandemic has led to a surge in gendered impacts, with one of the most significant areas being sexual violence. This infographic highlights the key statistics, trends related to the gendered impacts of COVID-19 on sexual violence and key pandemic takeaways from the "Learning is Healing" research report.



STATE OF SEXUAL VIOLENCE IN LIGHT OF COVID-19



INCREASED GLOBAL rise in domestic and online **SEXUAL VIOLENCE CASES**



30% INCREASE of **ONLINE SEXUAL VIOLENCE**
(includes cases of sexual harassment, cyberstalking, revenge porn, and sextortion)



WOMEN AND GIRLS account for the **MAJORITY** of sexual violence victims



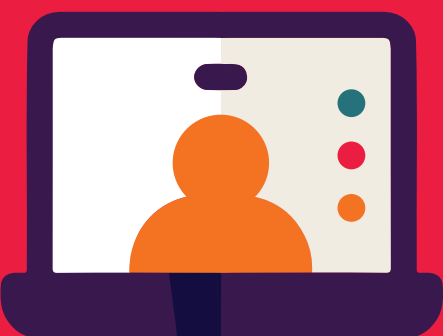
INCREASED RISK of **SEXUAL VIOLENCE** for Marginalized communities (including Indigenous folks, 2SLGBTQIA+ individuals, and people with disabilities)

CAUSES



INCREASED SOCIAL ISOLATION and **ECONOMIC STRESS** exacerbating existing power dynamics and contributed to incidents of sexual violence

REDUCED ACCESS to services and resources (such as shelters and counselling)



INCREASED TECHNOLOGY USE increased online sexual harassment and cyberbullying

BARRIERS TO REPORTING victim services and support organizations closed or working remotely during the pandemic



SOLUTIONS



INCREASED FUNDING for sexual assault **PREVENTION** and **RESPONSE SERVICES** (such as counselling, shelters, and legal support)

IMPROVED ACCESS for marginalized communities



Greater investment in **EDUCATION** and **AWARENESS** campaigns

Addressing the **ROOT CAUSES** of sexual violence (including patriarchy, colonization, and heteronormativity)



KEY TAKEAWAYS

MARGINALIZATION: COVID-19 made the gaps and safety issues for marginalized communities more visible.

TRAUMA: Rampant trauma was revealed and shown to be connected to everyone and everything.

RACISM, SEXISM, AGEISM: COVID-19 exposed how these systems were part of delivering the problem.

VIOLENCE: COVID-19 revealed the underbelly of evils within society and the need for action to reduce violence.

COMMUNITY CONNECTIONS: The importance of survival relationships and community connections was highlighted during COVID-19.

RURAL COMMUNITIES: Rural and remote communities were hit harder than urban communities by COVID-19.

BURNOUT: The workload exploded during COVID-19, leading to burnout for many workers.

HEALTHCARE: Access to healthcare, including mental healthcare, was diminished during COVID-19.

VULNERABLE PEOPLE: Vulnerable populations such as the homeless and those living with disabilities were made more vulnerable by COVID-19.

COPING STRATEGIES: New coping strategies were developed, including more people talking about assaults, and the need to appreciate the importance of face-to-face communication.

The COVID-19 pandemic has had a significant gendered impact on sexual violence, highlighting the urgent need for action to address it. By implementing targeted solutions that recognize the gendered impacts of the pandemic on sexual violence, we can work towards creating a safer and more equitable society for all. It is important to prioritize the safety and well-being of survivors and to continue working towards a society that is free of gender-based violence.